

# *Roller Dog*

Part No. 67141EX  
Revised June 1996

## Instruction Manual

Model #8023EX, #8024EX and Model #8025EX

Model #8024EX



Model #8025EX





# **GOLD MEDAL<sup>®</sup>**


**FUNFOOD EQUIPMENT & SUPPLIES**


Cincinnati, OH 45241-4807 USA


# SAFETY PRECAUTIONS

	<b>⚠ CAUTION</b>
	<p>This equipment is designed and sold for commercial use only. This equipment is not to be used by the consumer in home use. Do not allow direct contact of this equipment by the public when used in food service locations. Only personnel trained and experienced in the equipment operation may operate this equipment. Carefully read all installation instructions before operating the equipment.</p>

	<b>⚠ WARNING</b>
	<p>Always wear safety glasses when servicing this equipment.</p>

	<b>⚠ WARNING</b>
	<p>NEVER put your fingers or any object into the heating area. We do NOT assume any liability for injury due to careless handling or operation of this equipment.</p>

	<b>⚠ WARNING</b>
	<p>Any alterations to this equipment will void the warranty and may cause a dangerous situation. NEVER make alterations to the equipment.</p>

	<b>⚠ DANGER</b>
	<p>Machine must be properly grounded to prevent electrical shock to personnel. Do NOT immerse the equipment in water. Always unplug the equipment before cleaning or servicing.</p>

## NOTE

The information, specifications and illustrations contained in this manual represent the latest data available at time of publication. Right is reserved to make changes as required at the discretion of Gold Medal Products Company without notice.

## **INSTALLATION**

Install the Roller Dog in a level position. Connect the lead-in cord to a suitable outlet of correct voltage.

### **CONNECTION LOAD**

AC only. Wattage and voltage as indicated on nameplate. Use grounded 230V AC circuit.

## **OPERATING PROCEDURES**


1. Place hot dogs on rollers. Turn heat to designated temperature. Left knob controls the heat of one set of five (5) rollers and the right controls the other set of five (5) rollers.
2. For low heat, set control(s) to LOW using one or both sets of rollers. For high capacity, set control(s) to MEDIUM or HIGH using both sets of rollers.


## **CARE AND CLEANING INSTRUCTIONS**


Although corrosion resistant, stainless steel should be cleaned daily to prevent pitting. Do NOT use steel wool to clean, stainless steel wool can be used.

1. **!! UNPLUG THE POWER CORD FROM THE OUTLET !!**
2. Remove any remaining hot dogs from rollers.
3. Remove drip pans and clean thoroughly.
4. Use a mild detergent, soap and water, or soda-water to clean the roller grill. Rinse after washing and dry thoroughly before using.
5. For stubborn spots or stains a mild household abrasive cleaner can be used. When applying abrasive cleaners always rub in the direction of the grain to preserve metal finish.
6. When unit has been thoroughly cleaned, rinsed and dried, re-insert drip pans beneath the rollers.
7. The unit is now cleaned and ready for operation.

## MAINTENANCE INSTRUCTIONS

	<b>⚠ CAUTION</b>
	<p>THE FOLLOWING SECTIONS OF THIS MANUAL ARE INTENDED ONLY FOR QUALIFIED SERVICE PERSONNEL WHO ARE FAMILIAR WITH ELECTRICAL EQUIPMENT. THESE ARE NOT INTENDED FOR THE OPERATOR.</p>

	<b>⚠ WARNING</b>
	<p>Adequate eye protection must be used when servicing this equipment to prevent the possibility of injury.</p>

	<b>⚠ DANGER</b>
	<p>Do NOT immerse the equipment in water. Unplug your machine before servicing.</p>

### REPLACING THE HEAT ELEMENT

1. Remove the four (4) screws on the bottom of unit which secure the end covers to the unit. Withdraw the end covers from the housing by pulling them downward and out of the unit.
2. Unscrew the five (5) screws which hold fasten the conductor plate (P/N 87396) to the heat elements at the non-chained end of the elements.
3. Unscrew the screw which holds the other end of the heat element in place.
4. Turn the heat element 90 degrees and withdraw it from the roller tube.
5. Install a new heat element in the same manner in which it was withdrawn from the roller tube. The heat element should be oriented such that the heat element is situated approximately in-line with the center of the roller tube. The screw lugs at each end of the heat element should be oriented vertically.
6. Re-install the screw and fasten to the heat element at the chained end of the roller tube.
7. Re-install the five (5) screws and fasten the conductor plate to the heat elements. Be sure that all five heat elements are installed similarly.
8. Re-install the end covers.

## **ORDERING SPARE PARTS**

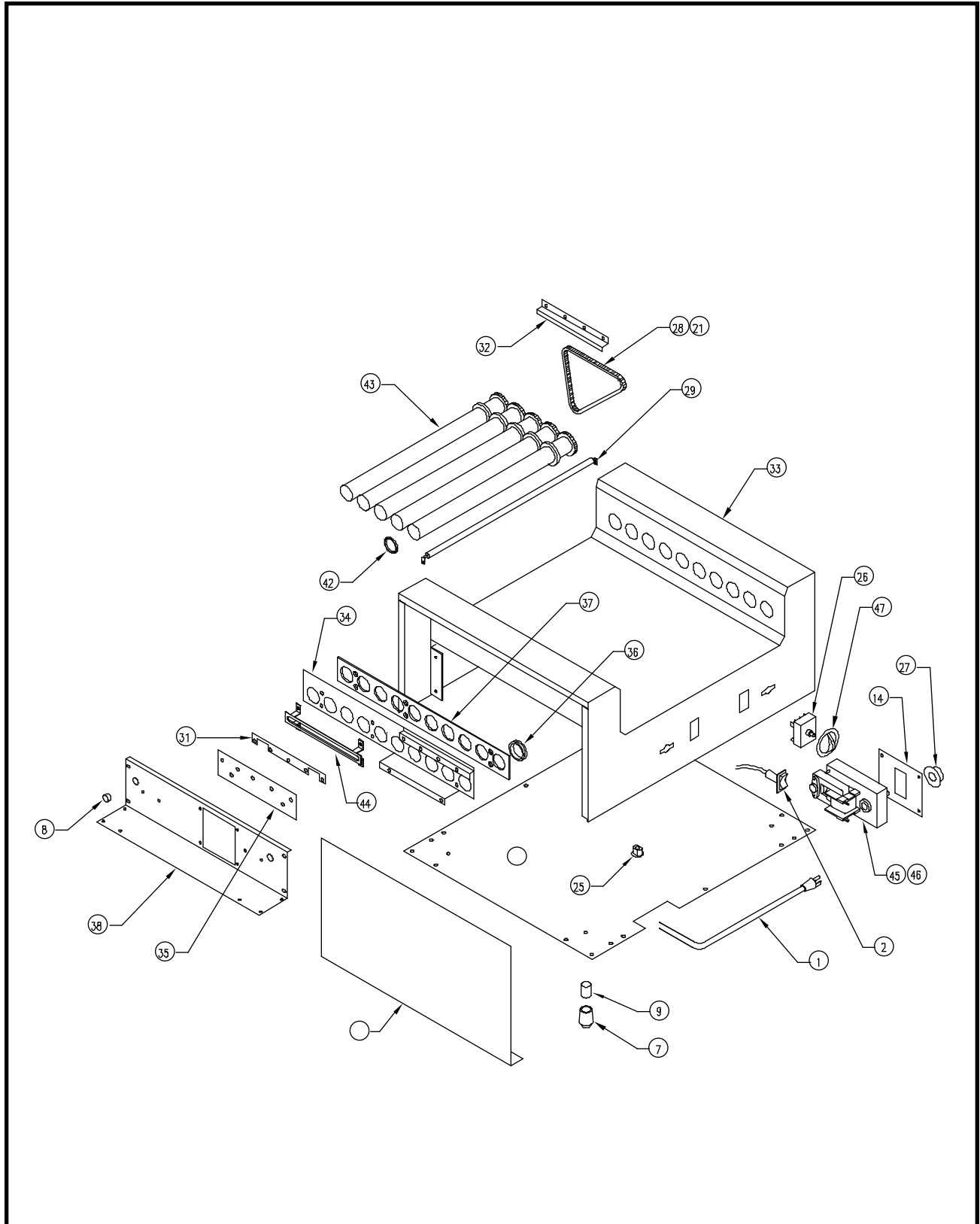
1. Identify the desired part by checking it against the photos, illustrations, and/or the parts list.
2. When ordering, please include part number, part name, and quantity desired.
3. Please include your model name and machine serial number (located on the machine nameplate) with your order.
4. Address all parts orders to:

Parts Department  
Gold Medal Products Co.  
10700 Medallion Drive  
Cincinnati, Ohio 45241-4807

or, place orders at:

(513) 769-7676  
Fax: (513) 769-8500  
E-mail: [goldme19@eos.net](mailto:goldme19@eos.net)

## ROLLER DOG ASSEMBLY



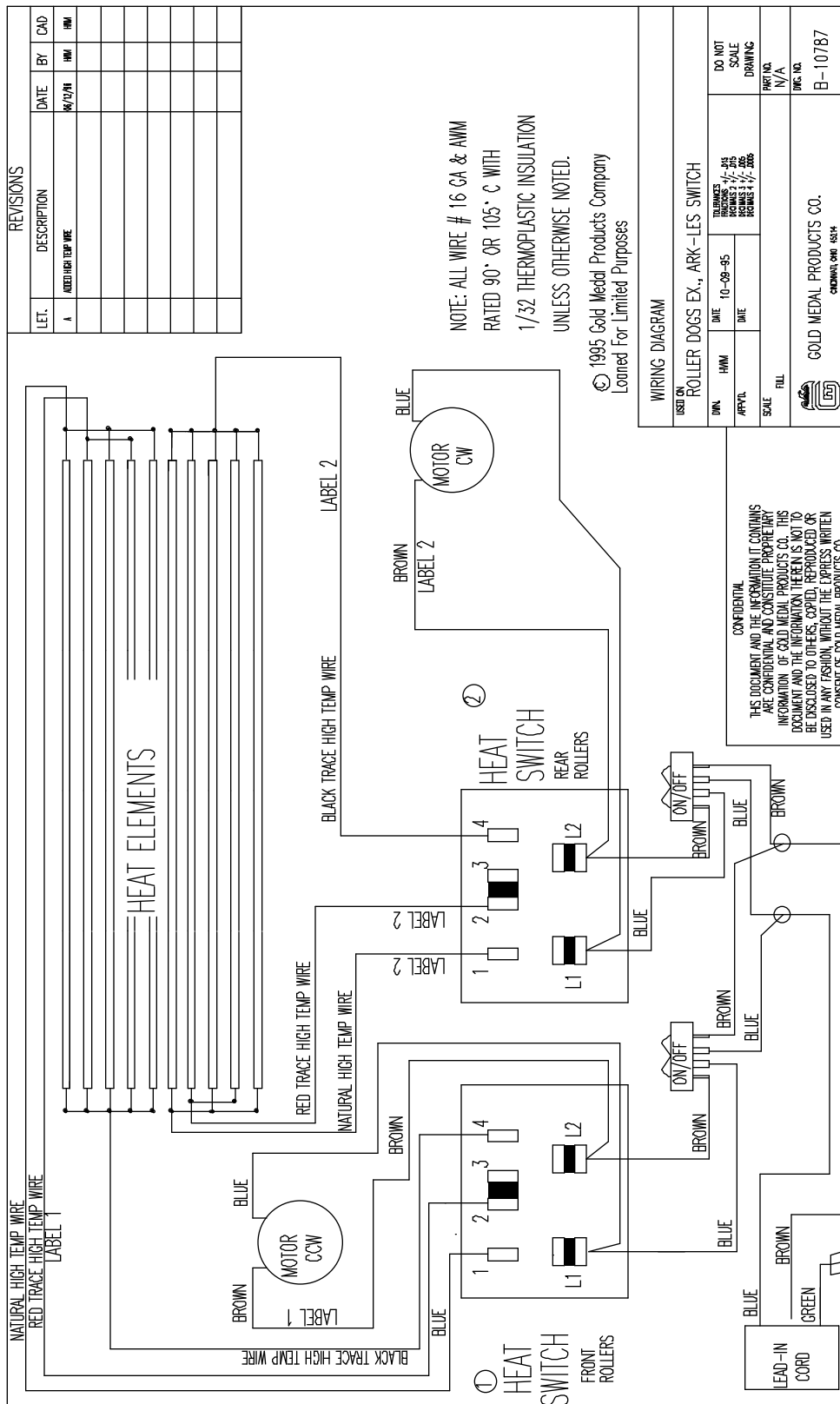
## PARTS LIST – ROLLER DOG ASSEMBLY

Parts are the same unless otherwise noted.

Parts are the same unless otherwise noted.

	Model #8023EX	Model #8024EX	Model #8025EX		
Item No.	Part No.	Part No.	Part No.	Description	Quantity
1	42369			Power Cord	1
2	40320			Rocker Switch	2
3	42044			#8 Screw	8
4	42828			#10 Screw	18
5	47010			Safe Operating Instuctions	1
6	47130			#8 Screw	9
7	47155			Rubber Feet	4
8	47236			Bushing	4
9	47328			Glide Feet	4
10	67137			Wiring Diagram Label	1
11	67142			Manual	1
12	67204			Motor Grommet	6
13	67207			Motor Spacer	8
14	78208			Motor Plate	2
15	67198	67213	67214	Carton	1
16	74117			#8 Washer	1
17	74143			#10 Nut	20
18	74149			#8 Nut	1
19	74150			#8 Lock Washer	1
20	76097			Unplug to Clean, Label	1
21	87044			Master Link	2
22	87087			Warning Label	4
23	87092			Tongs	1
24	87149			Caution Label	2
25	87163			Strain Relief	1
26	87352			Heat Switch	2
27	87353			Sprocket	2
28	87362			Drive Chain	2
29	67173	87389	87358	Heat Element	10
30	87392			Set Screw	2
31	87396			Conductor Plate	2
32	87469			Chain Support	2
33	67166	87477	87535	Main Body Weldment	1
34	87478			Assembly Bracket	2
35	87479			Insulator Board	2
36	87347			Teflon Bearing	10
37	87502			Multi-tube Bearing	1
38	87495			End Bottom Cover	2
39	87496			End Cover	2
40	67184	87497	87536	Bottom Cover	1
41	67186	87507	87546	Drip Pan	1
42	87511			O-ring	20
43	67193	87513	67140	Roller Assembly	10
44	87516			Element Support	2
45	87531EX			Motor CW	1
46	87532EX			Motor CCW	1
47	87540			Knob	2

## ELECTRICAL SCHEMATIC





# WARRANTY

WE WARRANT to the original purchaser the Gold Medal equipment sold by us to be free from defects in material or workmanship under normal use and service. Our obligation under this warranty shall be limited to the repair or replacement of any defective part for a period of six (6) months from the date of sale to the Original Purchaser with regard to labor and two (2) years with regard to parts and does not cover damage to the equipment caused by accident, alteration, improper use, voltage, abuse, or failure to follow instructions.

THIS WARRANTY IS IN LIEU OF ALL OTHER WARRANTIES EXPRESSED OR IMPLIED, AND OF ALL OTHER OBLIGATIONS OR LIABILITIES ON OUR PART, INCLUDING THE IMPLIED WARRANTY OF MERCHANTABILITY. THERE ARE NO WARRANTIES WHICH EXTEND BEYOND THE DESCRIPTION ON THE FACE HEREOF. We neither assume, nor authorize any other person to assume for us, any other obligation or liability in connection with the sale of said GOLD MEDAL equipment or any part thereof.

The term "Original Purchaser" as used in this warranty shall be deemed to mean that person, firm, association, or corporation who was billed by the GOLD MEDAL PRODUCTS COMPANY, or their authorized distributor for the equipment.

THIS WARRANTY HAS NO EFFECT AND IS VOID UNLESS THE ORIGINAL PURCHASER FIRST CALLS GOLD MEDAL PRODUCTS COMPANY AT 1-800-428-2676 TO DISCUSS WITH OUR SERVICE REPRESENTATIVE THE EQUIPMENT PROBLEM, AND, IF NECESSARY, FOR INSTRUCTIONS CONCERNING THE REPAIR OR REPLACEMENT OF PARTS.

*NOTE: This equipment is manufactured and sold for commercial use only.*



**GOLD MEDAL PRODUCTS COMPANY**  
**10700 Medallion Drive**  
**Cincinnati, Ohio 45241-4807 USA**